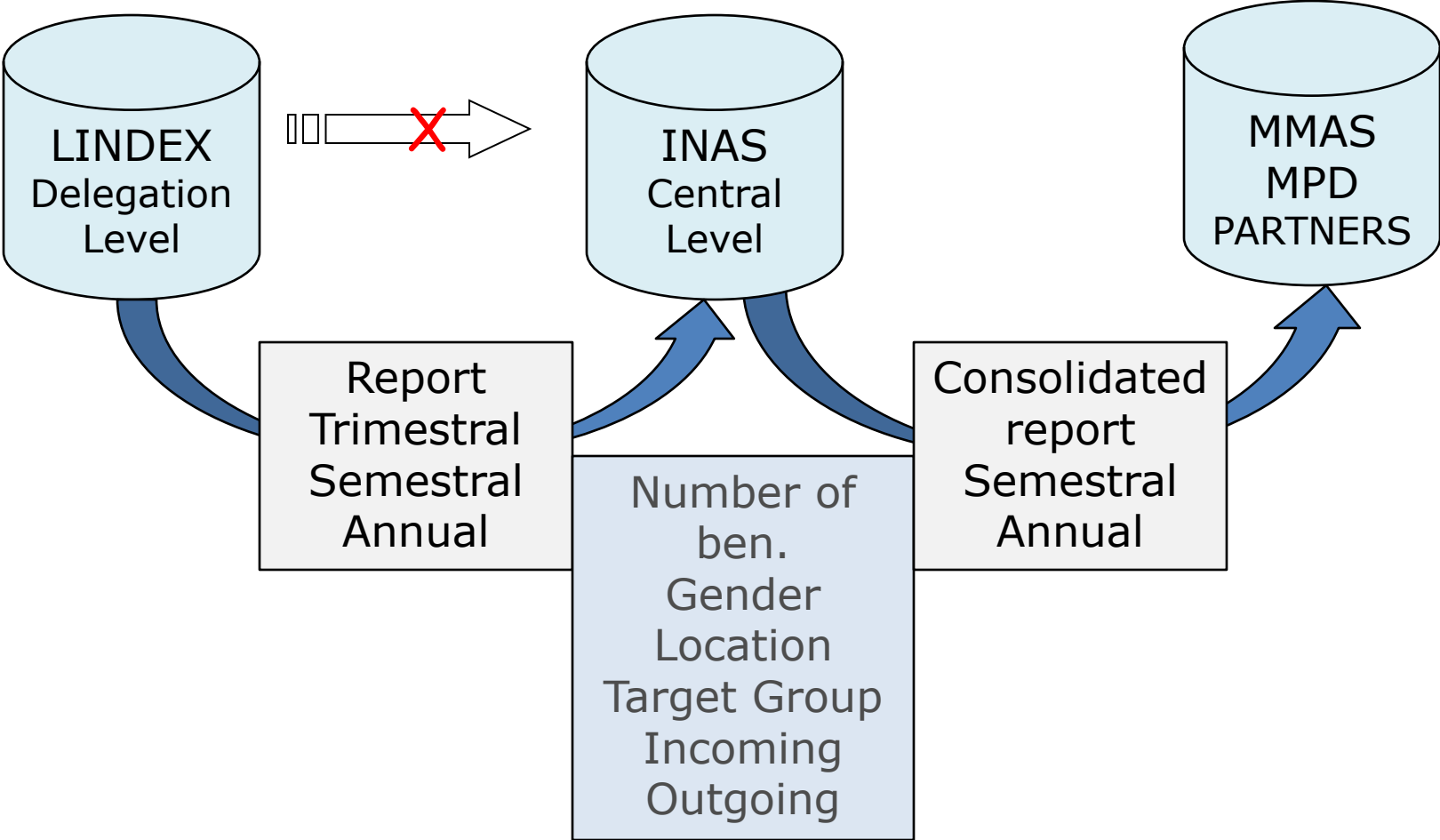


INAS MIS-SYSTEM

23 September 2010

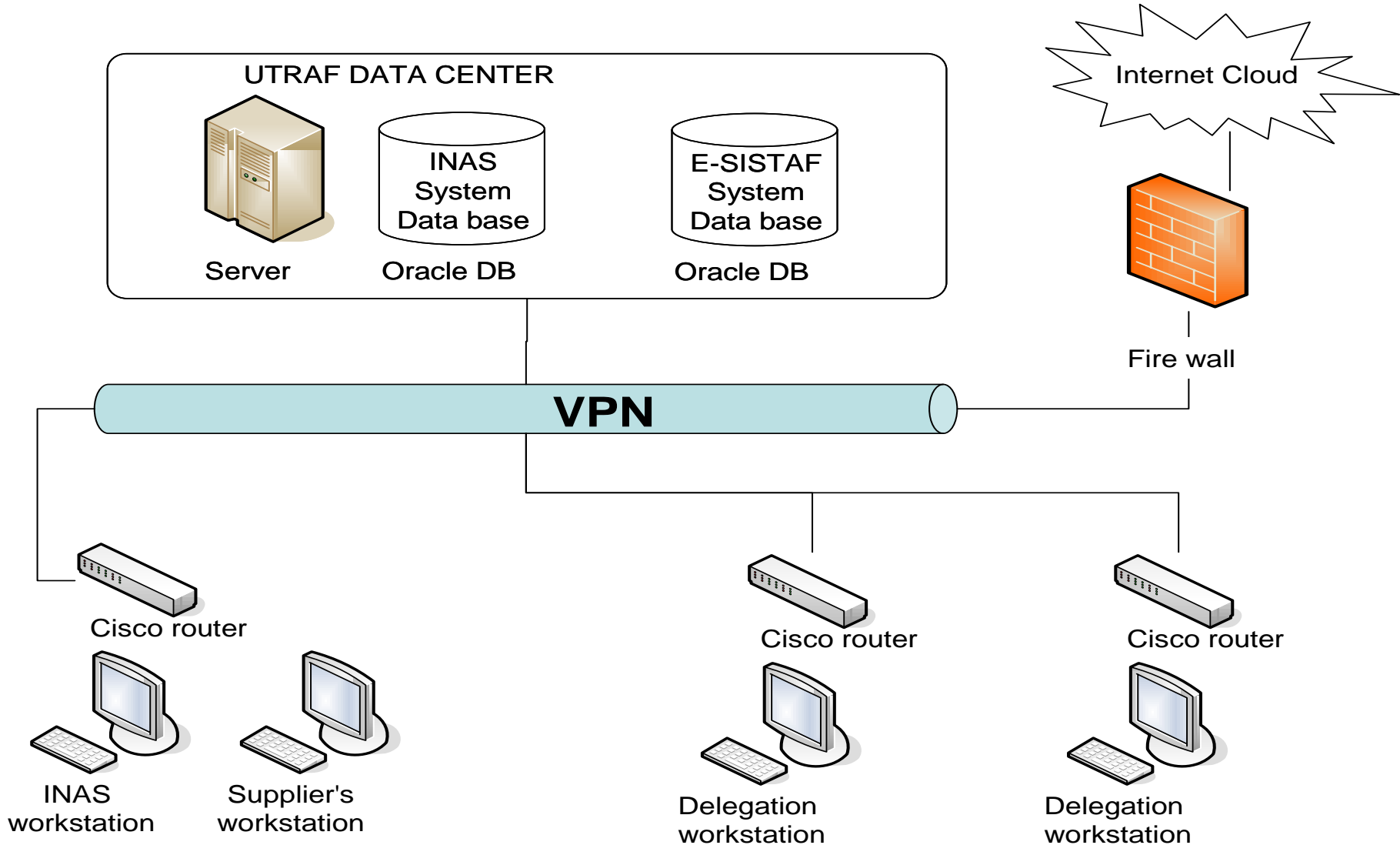
Current MIS (Lindex)



DELEGAÇÃO	GRUPOS ALVO																
	IDOSOS		DEFICIENTES		D. CRÓNICOS		MCA		CRIANÇAS		GRÁVIDAS		CESSANTES		SUB-TOTAL		TOTAL
	N.º Beneficiários		N.º Beneficiários		N.º Beneficiários		N.º Beneficiários		N.º Beneficiários		N.º Beneficiários		N.º Benefic.				
	Directos	Indirectos	Directos	Indirectos	Directos	Indirectos	Directos	Indirectos	Directos	Indirectos	Directos	Indirectos	Directos	Indirectos	Directos	Indirectos	Directos+Indirectos
MAPUTO	3,557	3,597	253	443	32	74	-	-	-	-	-	-	224		4,066	4,114	8,180
MATOLA	4,724	5,610	133	254	10	16	17	-	-	-	-	-	251		5,135	5,880	11,015
XAI-XAI	4,154	5,466	110	242	7	20	-	-	-	-	-	-	204		4,475	5,728	10,203
CHÓKWÊ	4,128	5,962	177	357	44	111	-	-	-	-	-	-	214		4,563	6,430	10,993
CHIBUTO	6,089	7,032	151	277	16	24	-	-	-	-	-	-	760		7,016	7,333	14,349
INHAMBANE	4,100	1,059	161	151	18	3	-	-	-	-	-	-	73		4,352	1,213	5,565
MAXIXE	5,768	1,241	194	161	4	3	-	-	-	-	-	-	196		6,162	1,405	7,567
BEIRA	6,806	4,238	547	750	3	-	153	1,035	-	-	-	-	285		7,794	6,023	13,817
CHIMOIO	9,715	13,311	751	1,637	158	366	-	-	-	-	-	-	595		11,219	15,314	26,533
TETE	4,062	3,498	327	686	58	151	-	130	-	-	-	2	178		4,625	4,467	9,092
MOATIZE	1,245	1,527	117	237	41	89	-	-	-	-	-	-	11		1,414	1,853	3,267
QUELIMANE	4,521	2,489	436	568	98	174	-	-	-	-	-	-	130		5,185	3,231	8,416
MOCUBA	5,127	5,719	340	505	213	322	-	-	-	-	-	-	98		5,778	6,546	12,324
NAMPULA	7,495	9,920	798	1,353	98	174	-	-	-	-	-	-	364		8,755	11,447	20,202
NACALA	6,233	8,243	212	400	24	49	-	-	-	-	-	-	75		6,544	8,692	15,236
ANGOCHE	6,179	7,438	356	526	13	27	-	-	-	-	-	-	52		6,600	7,991	14,591
LICHINGA	2,212	1,685	207	297	32	55	-	-	-	-	-	-	155		2,606	2,037	4,643
CUAMBA	2,934	3,755	287	434	48	88	-	-	-	-	-	-	138		3,407	4,277	7,684
PEMBA	7,171	8,134	287	420	54	116	5	100	-	-	-	-	99		7,616	8,770	16,386
SUB-TOTAL	96,220	99,924	5,844	9,698	971	1,862	175	1,265	-	-	-	2	4,102		107,312	112,751	220,063
TOTAL	196,144		15,542		2,833		1,440		-		2		4,102		220,063		220,063

New MIS (2011)

TECHNICAL INFRASTRUCTURE



1- Social subsidy DEMAND data

3.0 Social service offices (or center)	
1.	Name, Number, ministry, agency, INAS
2.	Type <ol style="list-style-type: none">Delegation officeSocial service officeOther (to be define)
3.	Social worker Name, ID

18.0 Subsidy demand	
1.	Demand number
2.	Date of demand
3.	Subsidy type
4.	Demand reception office
5.	Assigned social worker responsible for demand analysis
6.	Comments
7.	Demand status <ol style="list-style-type: none">AcceptedDelayedRefusedSuspended
8.	Decision date
9.	Effectiveness of the demand

19.0 Target group type	
1.	Children in Difficult Situation
2.	Elderly
3.	Persons with Disabilities
4.	Women heads of household
5.	Pregnant Women
6.	Poorly nourished mothers of children
7.	Adolescents and Youth
8.	Vulnerable young people
9.	Chronic patients
10.	People Living with HIV / AIDS
11.	Victims of incidents

5.0 Family	
1.	ID number
2.	Name
3.	Gender (M,F)
4.	Birth day (date)
5.	Nationality
6.	Civil Status
7.	Relatives link <ol style="list-style-type: none">ParentGrandparentChildrenBrother/sister
8.	Annual earning

8.0 Subsidy type	
1.	Type <ol style="list-style-type: none">BaseSocial UnitsDirect Social SupportFood AllowanceSocial Benefit for WorkGenerating IncomeOther
2.	Monthly amount of subsi.
3.	Historic amount per type

1.0 Beneficiary	
1.	No ID
2.	Name
3.	Gender (M,F)
4.	Birth day (date)
5.	Nationality
6.	Civil Status
7.	Death date
8.	Status indicator : <ol style="list-style-type: none">Active subsidies paymentInactive subsidies paymentPayment holdFraud
9.	Target group

6.0 Place of residence	
1.	Country
2.	Province
3.	City
4.	District
5.	Locality
6.	Address
7.	Place description
8.	Comments

7.0 Procurator	
1.	ID number
2.	Nam
3.	Gender (M,F)
4.	Birth day (date)
5.	Nationality
6.	Civil status
7.	Link with beneficiary (family, neighbor, civil servant)
8.	Annual personal earning \$

4.0 Social evaluation	
1.	Social condition
2.	Health condition
3.	Level of autonomy
4.	Comments on beneficiary from social service offices

Obrigado
Thank You