

Economic Activities in Monze SCT, Zambia

David Seidenfeld (AIR)

Ashu Handa (UNC)

This work is contracted under UNICEF Zambia, with funding by UNICEF, DFID, and Irish Aid.

Monze Study Background

- Community based targeting
- Labor constrained
- 2007-2010
- Corrupted RCT → Matching (PSM)
- Reduced sample n=1024 (originally 2217)

Expectation of Quality of Life

Proportion of households that believe life will be better in future (n=1014)

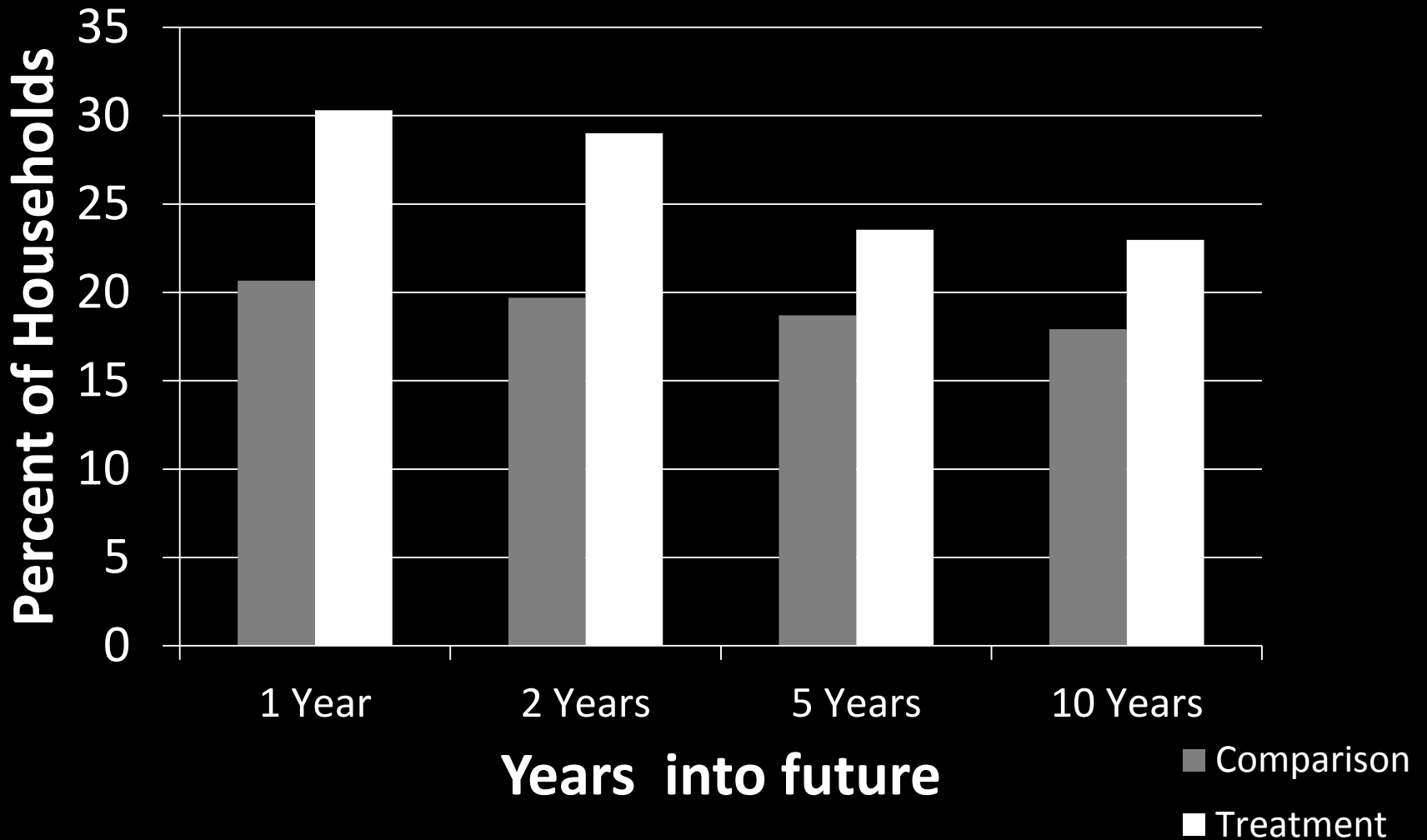


Table 5.5: Outcomes Children 6-16

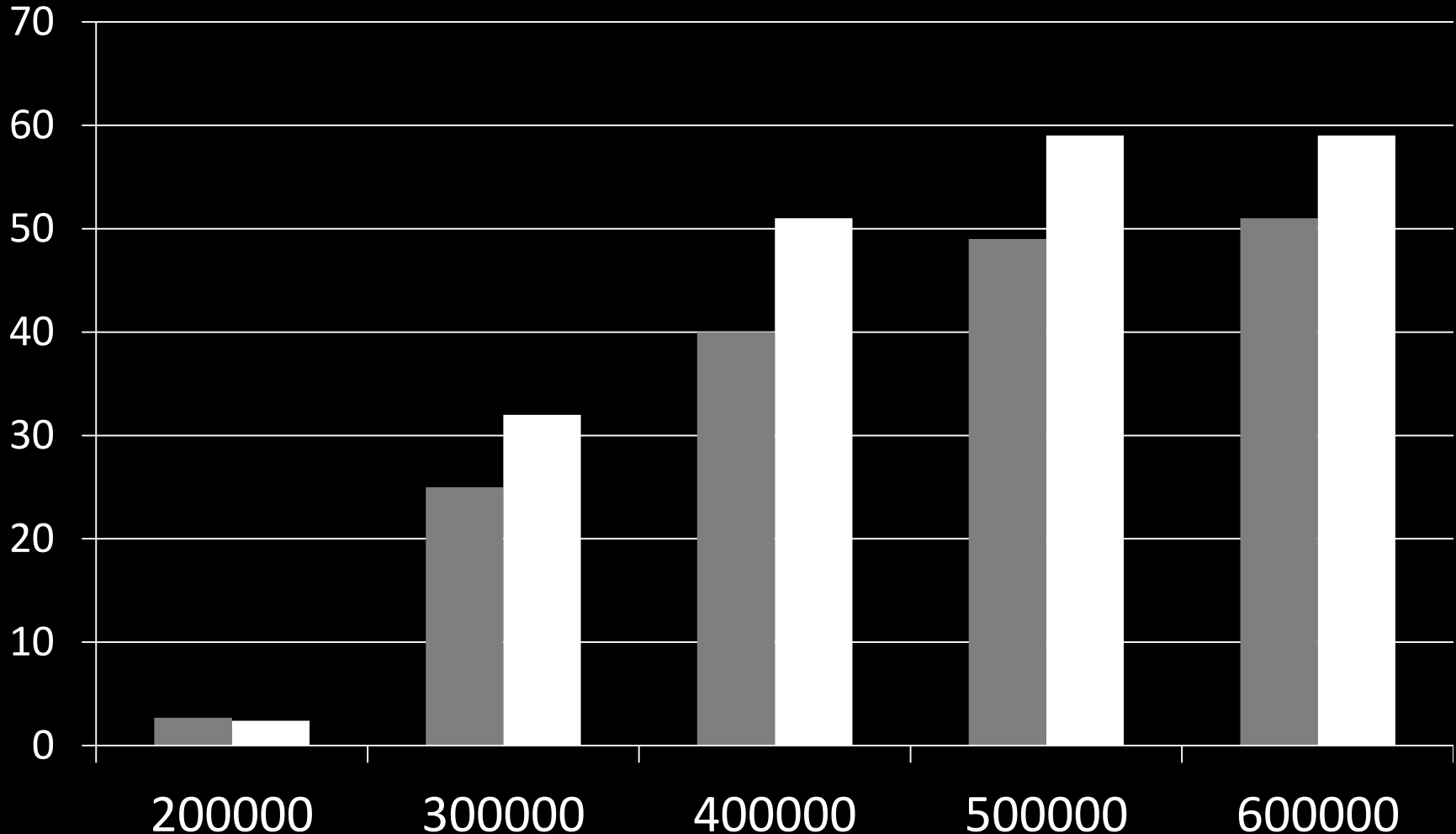
Variable	<u>With Controls</u>	<u>Without Controls</u>	Observations	Baseline Mean
	Marginal Effects	Marginal Effects		
Whether Enrolled*	0.070 (2.47)	0.070 (2.54)	3446	0.787
Whether Enrolled Age 6-8*	0.195 (2.28)	0.182 (2.17)	920	0.501
Whether Enrolled Age 15-16*	0.091 (1.93)	0.090 (1.90)	606	0.864

Propensity to Delay Gratification

Proportion willing to wait one month to receive sum of money

■ C

n=910



Amount will accept in one month versus Kw200,000 today

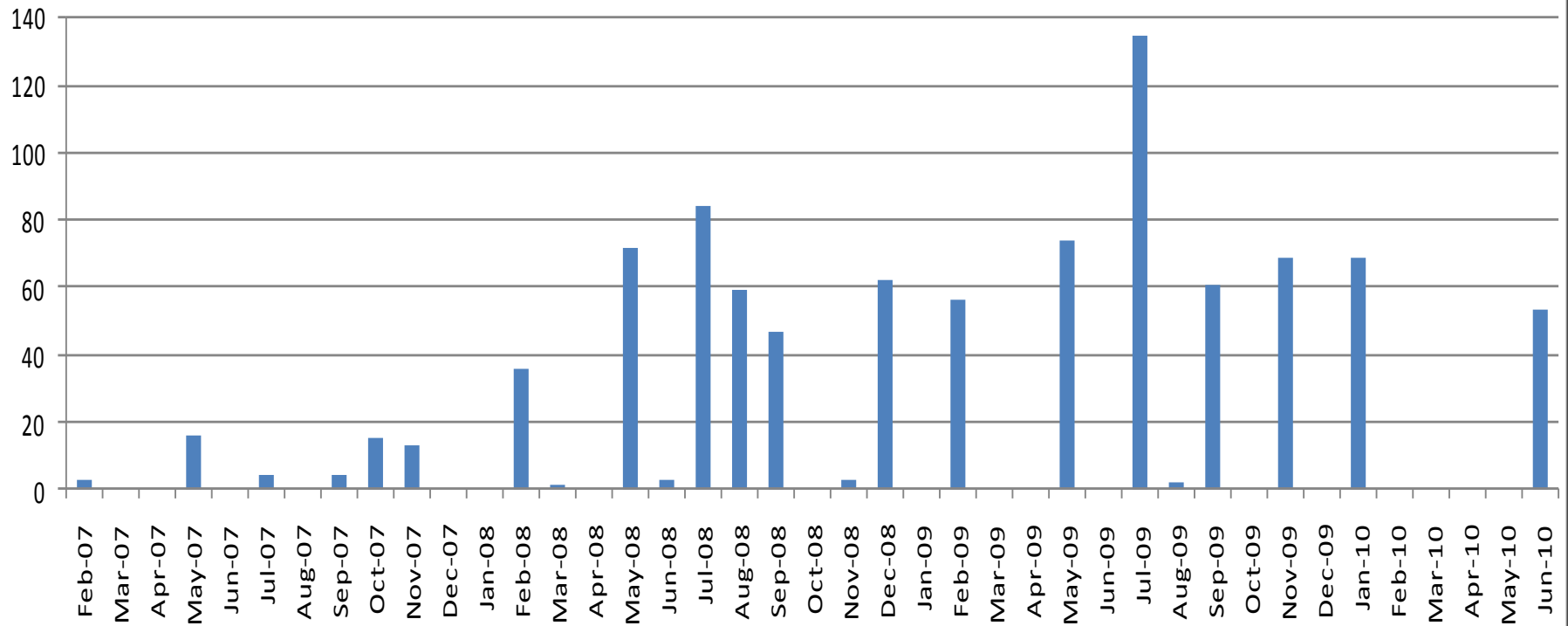
Investment

- 8 percentage points more likely to buy fertilizer (baseline mean = 0.098)
- 9 percentage points more likely to own chickens (baseline mean = 0.58)

n=1024

Lumpy Payments

Number of CWACs Paid Per Month (n=62)



Big Purchase

- 27 percentage points more likely to own goats (baseline mean 0.18)
- 150% increase in likelihood of owning goats.

n=1024

Limitations

- Lost benefits of balance from randomization
- Instrument inadequate on expenditures
- Reduced sample size, MDES ~ 0.40 SD
- Missed payments in year prior to follow up

Table 2.1: Mean Differences between Original Treatment and Control Status

	Original Controls		Original Treatment		<i>P-value</i>
	<i>Mean</i>	<i>Std</i>	<i>Mean</i>	<i>std</i>	
Total food consumption per month per capita (Kw)	21910.0	21381.8	19988.7		
bought fertilizer (1=Yes 2=No)	2	9	20974.29	3	0.289
DHS style wealth index	1.90	0.30	1.92	0.27	0.035
Head's age (years)	0.09	1.05	0.01	0.96	0.080
Head's education (years)	59.40	16.65	59.31	17.00	0.897
Female Headed Household	3.87	3.56	3.85	3.53	0.898
Household size	0.59	0.49	0.59	0.49	0.792
Dependency ratio	5.44	3.12	5.58	3.22	0.307
# of orphans	2.43	1.72	2.42	1.67	0.820
# of children (0-18)	2.03	1.86	2.07	1.98	0.634
# of adults (19-64)	3.20	2.43	3.23	2.43	0.783
# of seniors (65+)	1.66	1.42	1.74	1.46	0.246
distance to nearest secondary school	0.56	0.64	0.60	0.68	0.202
distance to nearest clinic	27.67	124.67	22.41	19.01	0.172
No toilet	5.84	6.29	6.23	5.76	0.126
Unprotected water source	0.57	0.49	0.60	0.49	0.193
Observations	0.57	0.49	0.60	0.49	0.193
	1072		1145		



P-value is for t-test for statistical difference in means between treatment and control groups (bold indicates significance at 5 percent or less).

Table 2.2: Mean Differences between Actual Treatment and Original Control Group

	Original Controls		Actual Treatment Grp		<i>P-value</i>
	<i>Mean</i>	<i>Std</i>	<i>Mean</i>	<i>std</i>	
Total food consumption per month per capita (Kw)	21924.43	21517.85	21947.36	21031.39	0.984
bought fertilizer (1=Yes, 2=No)	1.89	0.31	1.95	0.22	0.000 ←
DHS style wealth index	0.11	1.05	-0.27	0.77	0.000 ←
Head's age in years	59.21	16.67	64.43	15.01	0.000 ←
Head's years of schooling	3.91	3.57	2.81	3.14	0.000 ←
Female headed household	0.59	0.49	0.68	0.47	0.001 ←
Household size	5.48	3.12	4.89	2.91	0.000 ←
Dependency ratio	2.42	1.72	2.43	1.61	0.969
# of orphans	2.04	1.86	2.09	1.88	0.600
# of children (0-18)	3.22	2.43	2.71	2.17	0.000 ←
# of adults (19-64)	1.69	1.43	1.42	1.32	0.000 ←
# of seniors (65+)	0.56	0.64	0.75	0.65	0.000 ←
distance to nearest secondary school	28.06	126.41	23.74	18.65	0.280
distance to nearest clinic	5.84	6.36	6.34	5.51	0.110
no toilet	0.58	0.49	0.68	0.47	0.000 ←
unprotected water source	0.58	0.49	0.68	0.47	0.000 ←
Observations	1072		516		

P-value is for t-test for statistical difference in means between treatment and control groups (bold indicates significance at 5 percent or less).

Table 2.3: Mean Differences between Actual Treatment and Matched Comparison Group

	Matched Comparisons		Actual Treatment Group		<i>P-value</i>
	<i>Mean</i>	<i>Std</i>	<i>Mean</i>	<i>std</i>	
Total food consumption per month per cap	23126.74	23267.50	21947.36	21031.39	0.396
bought fertilizer (1=Yes, 2=No)	1.93	0.26	1.95	0.22	0.173
DHS style wealth index	-0.31	0.77	-0.27	0.77	0.442
Head's age in years	64.65	15.06	64.43	15.01	0.817
Head's years of schooling	2.73	3.08	2.81	3.14	0.665
Female headed household	0.69	0.46	0.68	0.47	0.817
Household size	4.69	2.64	4.89	2.91	0.267
Dependency ratio	2.43	1.83	2.43	1.61	0.979
# of orphans	2.00	1.82	2.09	1.88	0.461
# of children (0-18)	2.63	2.05	2.71	2.17	0.518
# of adults (19-64)	1.40	1.32	1.42	1.32	0.782
# of seniors (65+)	0.69	0.62	0.75	0.65	0.127
distance to nearest secondary school	33.19	180.30	23.74	18.65	0.240
distance to nearest clinic	6.27	7.09	6.34	5.51	0.860
no toilet	0.61	0.49	0.68	0.47	0.040 
unprotected water source	0.61	0.49	0.68	0.47	0.040 
Observations	508		516		

P-value is for t-test for statistical difference in means between treatment and comparison group (bold indicates significance at 5 percent or less).