

# Setting the Scene:

Overview of SCT impact evaluations in sub-Saharan Africa—  
status of impact evaluations in the region, the Transfer Project,  
the research network, From Protection to Production (PtoP) Project

Benjamin Davis  
Ashu Handa

Third annual Transfer Project workshop on evaluating the impact of  
cash transfer programs in sub Saharan Africa

Chaminuka Lodge, Zambia  
April 23-25, 2013



# Goals of the workshop

- Share experiences on design and implementation of cash transfer impact evaluations
  - Building evaluation rigor within program implementation process
  - Methodological conundrums arising when first-best strategy not available
- Build lines of communication among evaluators and clients
  - What do we need to know and why
  - What instruments already exist



# Who is behind the workshop

- Under umbrella of The Transfer Project
  - UNICEF, SCUK, UNC, FAO
  - National government and research partners
- Collectively funded
  - Core funding by the EU (FAO food security program)
  - Contributions by UNICEF country offices, FAO-HQ and other participants paying their own way
- Organized by UNICEF-Zambia and FAO-HQ



# Transfer Project: Objectives

- **Provide evidence** on the effectiveness of social cash transfer programs in achieving impacts for children
- **Inform** the development and design of social cash transfer **policy** and programs
- **Promote learning** across the continent on the design and implementation of social cash transfer evaluations and research



# Transfer Project: The 3 Pillars

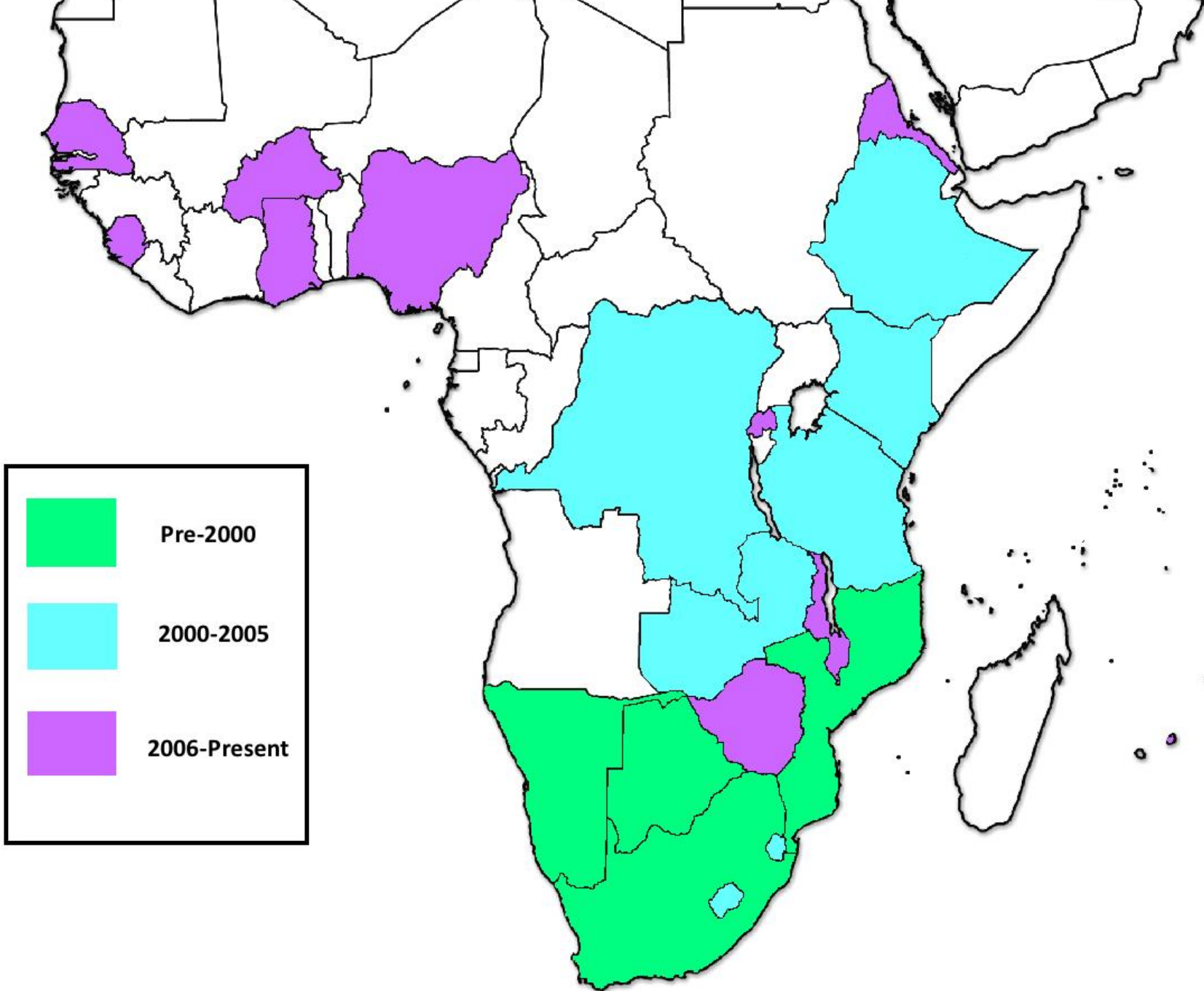
1. Regional learning, information exchange and network/ community of practice
2. Technical assistance on design and implementation of impact evaluation and identification of research areas
3. Synthesis of regional lessons on programme design



# Typology of Programs

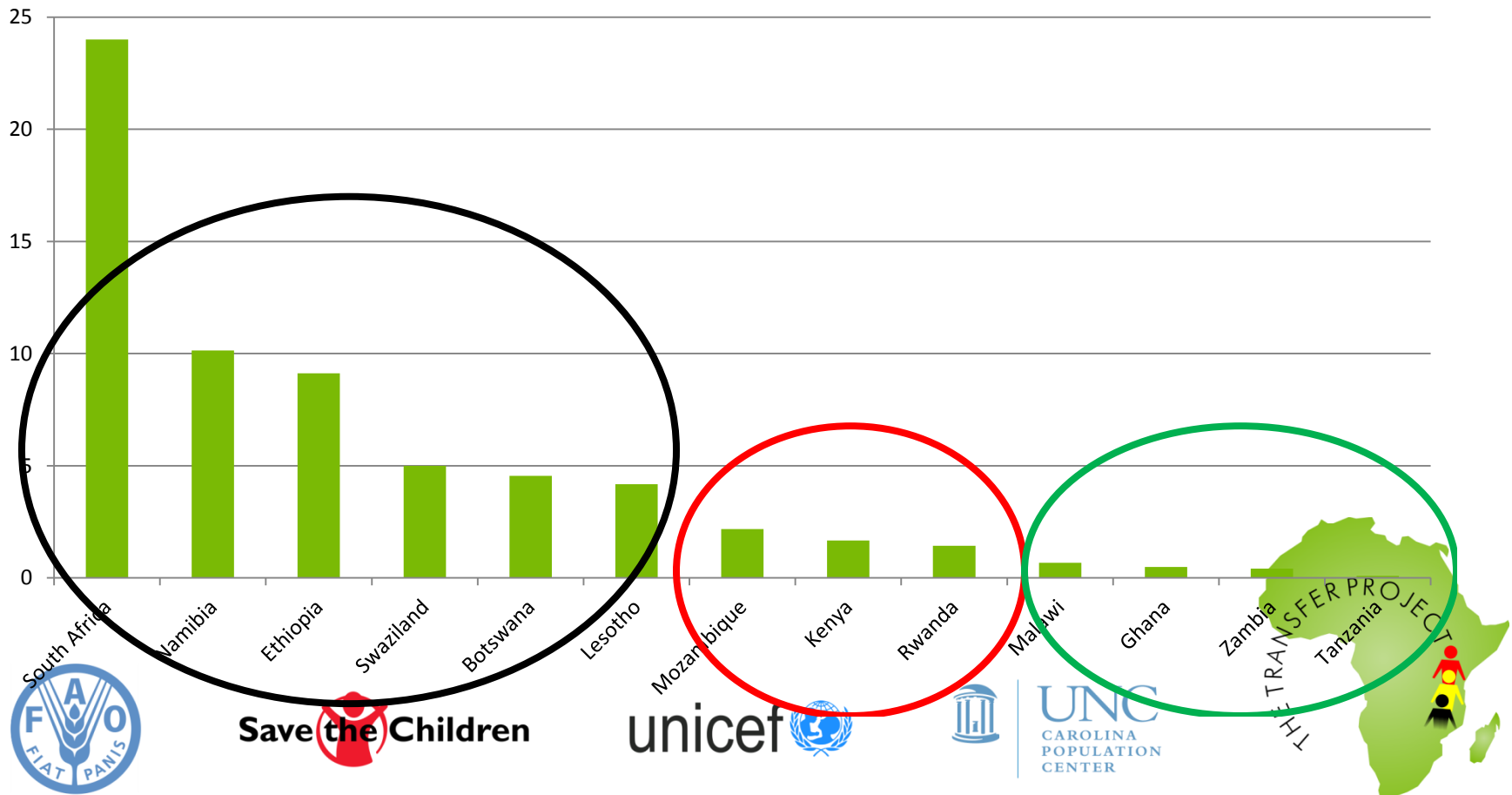
- Universal programs in (wealthier) Southern Africa
  - Categorical targeting, old age pensions
- Targeted programs, unconditional or ‘social’
  - Multiple vulnerabilities: ultra-poor, labor constrained, OVC, children <5
- Cash for work for able bodied
  - Linked to productive activities (PSNP, VUP, Somalia)
- A few conditional programs
  - BF, TASAF, Kano (Nigeria)





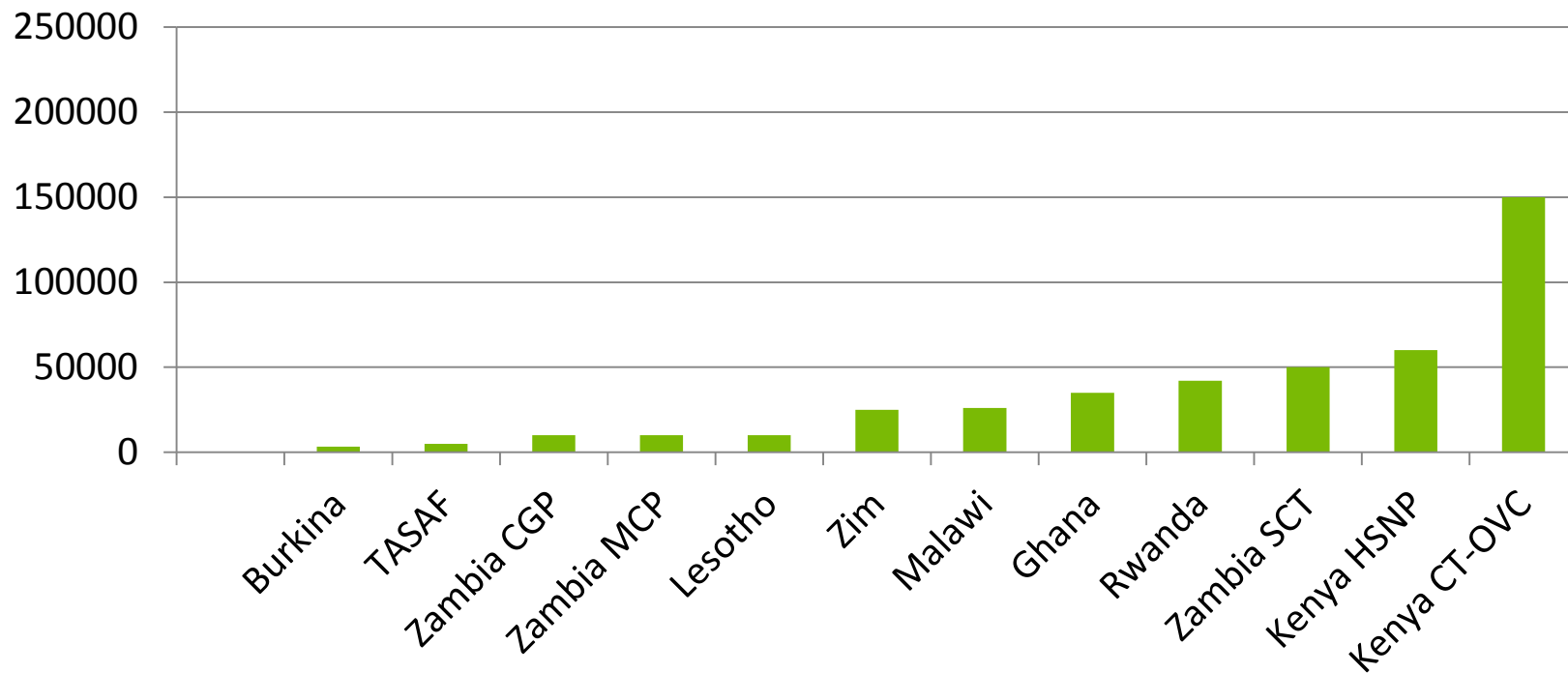
# Cash transfers national scale up (as of end 2010)

% of population covered by cash transfer program

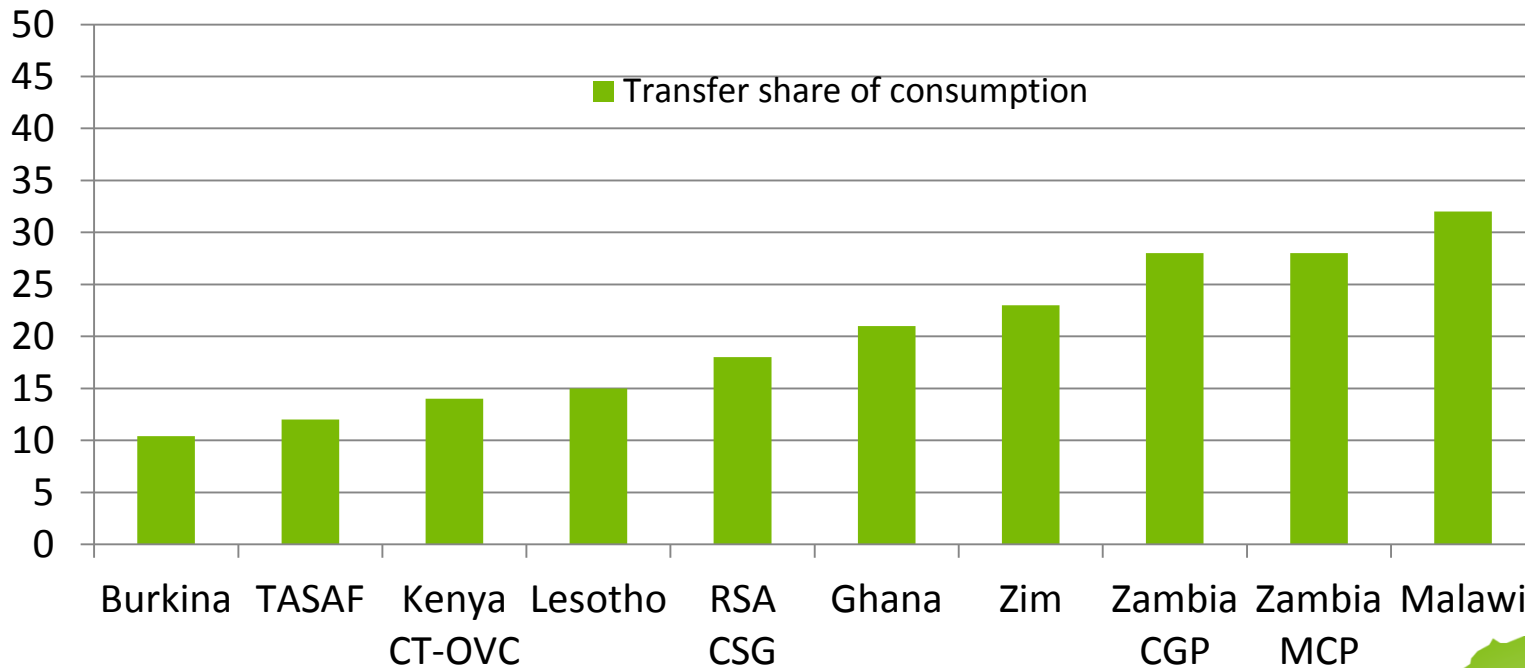




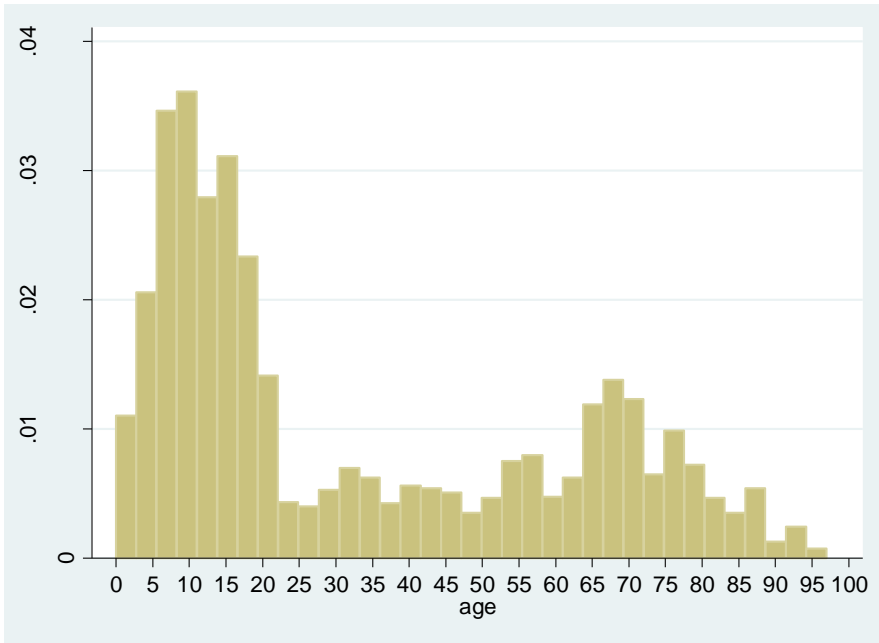
# Number of households covered



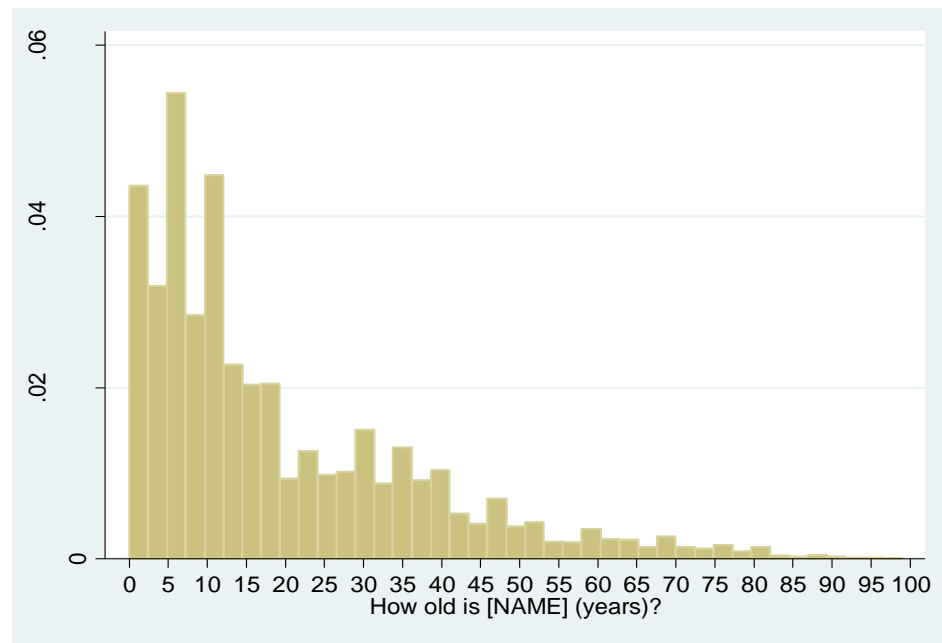
# Transfer values (share of recipient consumption)



# Labor-constrained and OVC criteria select unique households: Malawi



Malawi SCT Households

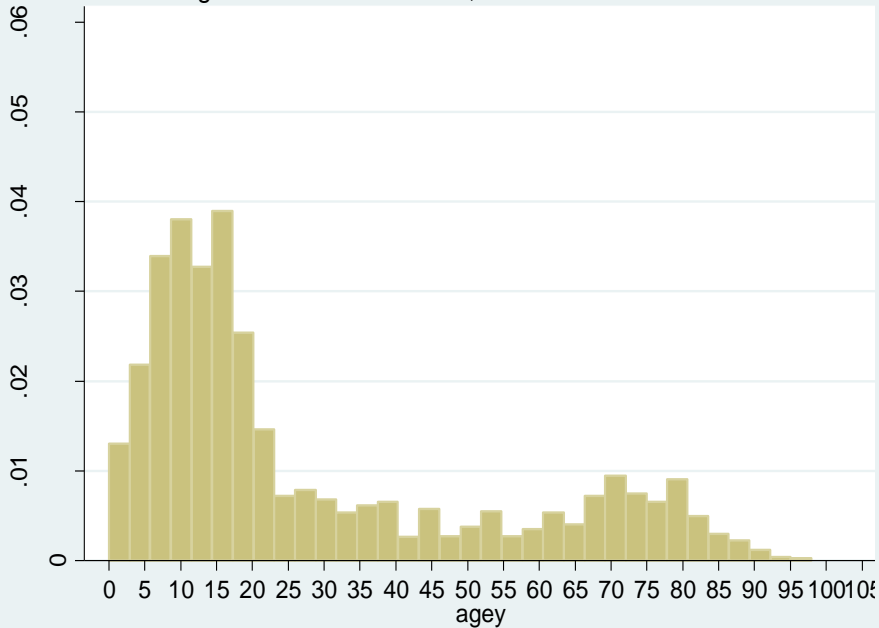


Rural Ultra-Poor IHS3

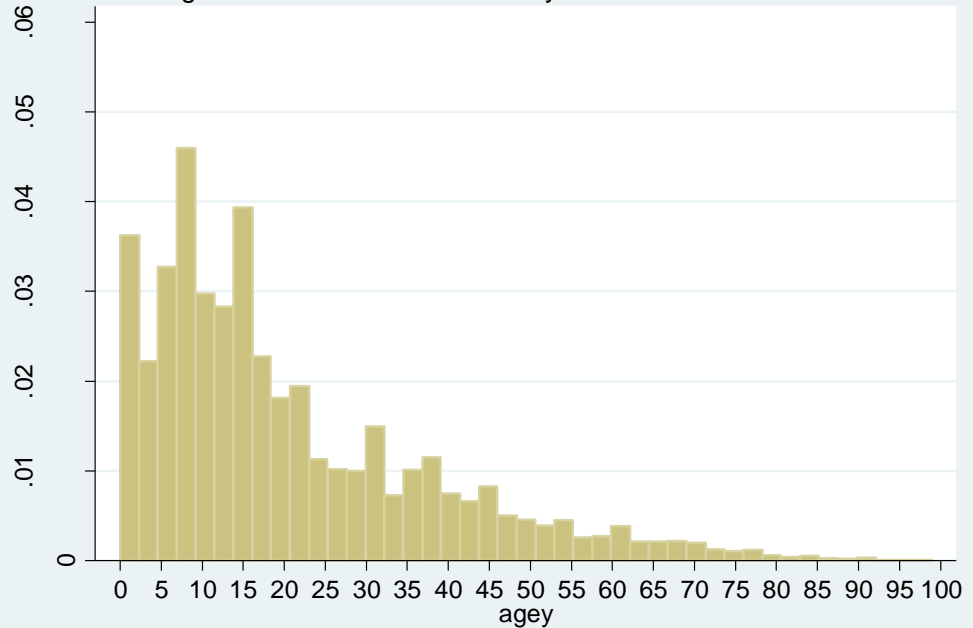


# Labor-constrained and OVC criteria select unique households: Zambia

Age Distribution of Monze, Zambia SCT Beneficiaries



Age Distribution of Rural Severly Poor: Zambia LCMS 2010



Zambia (Monze) SCT Households

Rural Ultra-Poor LCMS 2010



# Ghana: Older heads, fewer children, smaller households (again!)

	All Rural	Rural Poor	LEAP
Age of head (yrs)	47	48	61
Head female	17	25	60
Head no school	47	65	70
Household size	4.7	6.3	3.8
# children 0-17	2.4	3.4	1.8
# children 0-5	0.82	1.16	0.44
# children not living w/ parent	0.76	0.90	1.80



[www.cpc.unc.edu/projects/transfer](http://www.cpc.unc.edu/projects/transfer)



UNC  
CAROLINA  
POPULATION  
CENTER



# Cash transfer program impact evaluations in Sub Saharan Africa (19 in 13)

- Malawi SCT
  - Mchinji pilot, 2008-2009
  - Expansion, 2013-2014
- Kenya
  - CT OVC, Pilot 2007-2011
  - CT OVC, Expansion, 2012-2014
  - HSNP, Pilot 2010-2012
- Mozambique PSA
  - Expansion, 2008-2009
- Zambia
  - Monze pilot, 2007-2010
  - Child Grant, MCP, 2010-2014
- South Africa CSG
  - Retrospective, 2010
- Burkina Faso
  - Experiment, 2008-2010
- Ethiopia
  - PNSP, 2006-2010
  - Tigray SPP, 2012-2014
- Ghana LEAP
  - Pilot, 2010-2012
- Lesotho, CGP
  - Pilot, 2011-2013
- Uganda, SAGE
  - Pilot, 2012-2014
- Zimbabwe, SCT
  - Pilot, 2013-2015
- Tanzania, TASAF
  - Pilot, 2009-2012
  - Expansion, 2012-2014



# Summary of results on social outcomes

	Schooling	Morbidity	Health care	Anthro.	ECD
Burkina	x				
Ghana LEAP	x	NS	X		
Kenya CT-OVC	x	x*	X*	NS	
Lesotho					
Mlw Mchinji	X	X	X	?	
RSA CSG	X		NS		
Zam CGP					
Zam Monze	x	NS	NS		
Zam MCP					



Not collected    x=significant    empty=pending    NS=not significant



# Summary of results on economic outcomes

	Consumption	Food security	Assets	Production
Burkina				
Eth PSNP	x	x	x	x
Ghana LEAP	NS	X	NS	NS
Kenya CT-OVC	X	X	x	NS
Lesotho				
Mlw Mchinji	X	X	x	x
RSA CSG		X		
Zam CGP	X	X	x	x
Zam Monze	NS	NS	x	x
Zam MCP	x	x	x	x

██████████ Not collected    x=significant    empty=pending    NS=not significant





# Summary of results on adolescent safe transition to adulthood

	Sexual debut	Mental health	Early pregnancy	Violence	Other risks
Kenya CT-OVC	x	x	x		NS
RSA CSG	x		x		X
MIW SCT					
Zam MCP					
Zim HSCT					

[REDACTED] Not collected    x=significant    empty=pending    NS=not significant



# Comparison of secondary school impacts of CCTs and SCTs

## Impact of Cash Transfers on Secondary School Enrollment (percentage points)

Mexico Progresa	CCT	6
Colombia Familias	CCT	6
Turkey	CCT	5
Bangladesh (females only)	CCT	12
Ecuador	CT, announced as CCT	10
Kenya	SCT	8
Zambia (Monze)	SCT	9
Ghana LEAP	SCT	6



# Other topics in new round of IEs

- Conditionality (BF, Kenya)
- Local economy effects
- Credit constraints
- Time preference, risk aversion
- Happiness, Quality of Life
- Movement of OVC in- and out-of household (MLW, ZIM)



# Our websites

The Transfer Project

<http://www.cpc.unc.edu/projects/transfer>

From Protection to Production Project

<http://www.fao.org/economic/PtoP/en/>

